

// 10 LUMOLED K2/K3 PRODUCT SERIES

A CLASSIC IN A NEW DESIGN

LumOLED K2/K3

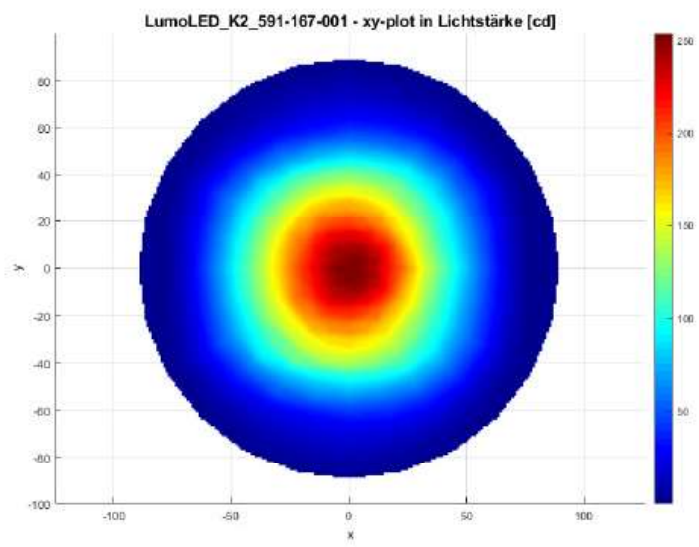
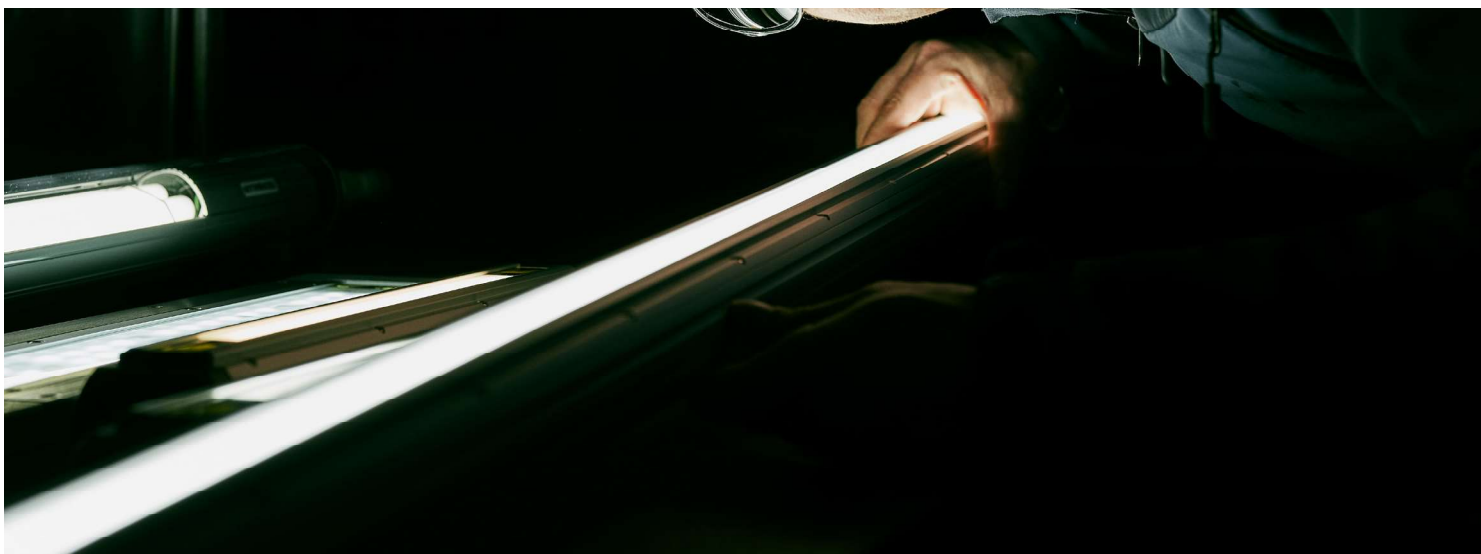
As in all families: we all have the same origin, we all have something in common, but still there are, here and there, substantial differences with everyone being unique with some rough edges. This is also true for our product family LumOLED K2/K3!

On the one hand there are the K2 lamps with the classic protective cover, on the other hand there is a K2 lamp with a borosilicate protective tube and, additionally, there is the K3 lamp design with a traditional tube lamp housing made of polycarbonate.

The differences are not only due to design. Different light output, various light colours, 24 V DC, 230 V AC, cable gland or connection cable, ... for almost every application one of our „family members“ may come into question.

What all of our K2/K3 lamps have in common: the usual TECHMALUX quality, the robust design and the reliable functionality.





Distribution of the luminous intensity based on LumoLED K2 | Item no. 591-167-001

LumoLED K2

// TECHNICAL DATA

ITEM NO.: 591-027-008

Operating voltage	230 V AC 50 Hz
Rated output	10 W
Ambient temp.	-5°C - max. 40°C
System of protection	IP67
Protection class	SK II
Weight	0,75 kg
Cover	Borosilicate
Lamp housing	Polyamid
Type of lighting	Tubular lamp
Scope of application	Industrial sector



// LIGHT SOURCES

Number of LEDs	28
Power	7,2 W
Colour rendering	Ra > 80
Lifetime	> 60.000 h
Power factor	0,4
Luminous flux	1050 lm
Light efficiency	145 lm / W
Light colour	5000 K

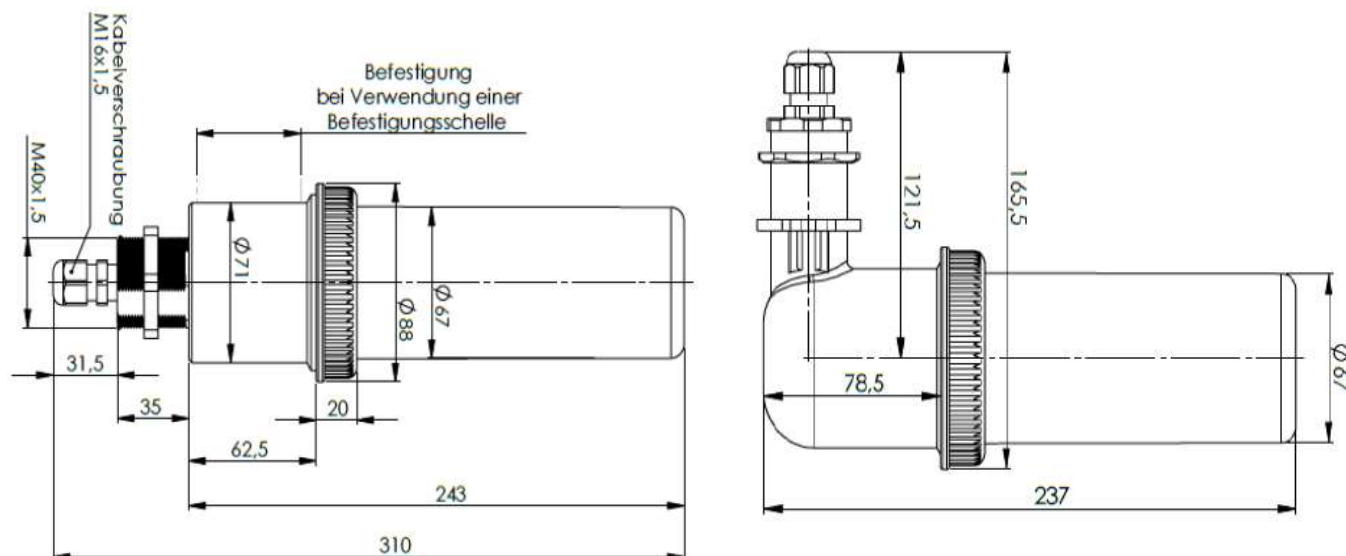
// ELECTRICAL CONNECTION

Cable gland	M16x1,5 PA
Internal connection	luster terminal, 2-pole

// BALLAST

Output voltage	24 V DC
Output power	12 W

// TECHNICAL DRAWING



// SHORT OVERVIEW

TYPE	ITEM NO.	VOLTAGE	POWER	LUMINOUS/ LUMEN	COVER	DIMENSIONS/ MM	CONNECTION
LumoLED K2	591-027-008	230 V AC	10 W	1050	Borosilicate	Ø 67x310	cable gland

// VARIATIONS

TYPE	ITEM NO.	VOLTAGE	POWER	LUMINOUS/ LUMEN	COVER	DIMENSIONS/ MM	CONNECTION
LumoLED K2	591-027-009	230 V AC	12 W	1260	Borosilicate	Ø 67x287	cable gland straight
LumoLED K2	591-027-010	230 V AC	12 W	1330	Borosilicate	Ø 67x261	cable gland straight
LumoLED K2	591-027-011	230 V AC	12 W	1260	Borosilicate	Ø 67x237	cable gland angled
LumoLED K2	591-027-012	230 V AC	12 W	1330	Borosilicate	Ø 67x213	cable gland angled
LumoLED K2	591-027-013	230 V AC	10 W	1065	Borosilicate	Ø 67x260	cable gland angled

// FIXING (optional)



ITEM NO. 599-001-001
fixing clamp Ø70 mm, galvanised, straight



ITEM NO. 599-001-002
fixing clamp Ø70 mm, galvanised, angle plug, wall distance 70 mm, with distance bush



ITEM NO. 599-001-003
fixing clamp Ø70 mm, galvanised, angle plug, wall distance 100 mm



ITEM NO. 599-001-004
fixing clamp Ø70 mm, galvanised, straight, with distance tube



ITEM NO. 599-001-016
Tension clamp D70 mm VPE 1 pc.



ITEM NO. 599-001-011
NBR; galvanised; washer cylinder head screw



ITEM No. 599-001-012
NBR; galvanised



ITEM NO. 599-001-010
NBR; galvanised spacer socket



ITEM NO. 599-001-008
NBR; galvanised, cylinder head screw washer



ITEM NO. 599-001-022
silicone, A4, cylinder head screw washer



ITEM NO. 599-001-015
NBR; galvanised; spacer socket wing screw short

// STANDARDS

EN 55015:2016-04
EN 60598-1:2015-10
EN 62031:2015-09
EN 61000-4-4:2013-4
EN 61000-3-2:2015-3
EN 61000-4-5:2015-03
EN 61000-3-2:2017-03
EN 61000-4-2:2009-12

TECHMALUX

LumoLED K2

// TECHNICAL DATA

ITEM NO.: 591-167-001

Operating voltage	24 V DC
Rated output	7,2 W
Ambient temp.	-5°C - max. 40°C
System of protection	IP67
Protection class	SK II
Weight	1,04 kg
Coverage	Borosilicate
Lamp housing	Polyamid
Type of lighting	Tubular lamp
Scope of application	Industrial sector



// LIGHT SOURCES

Number of LEDs	28
Current	0,3 A
Colour rendering	Ra > 80
Luminous flux	1050 lm
Light efficiency	145 lm / W
Light colour	5000 K

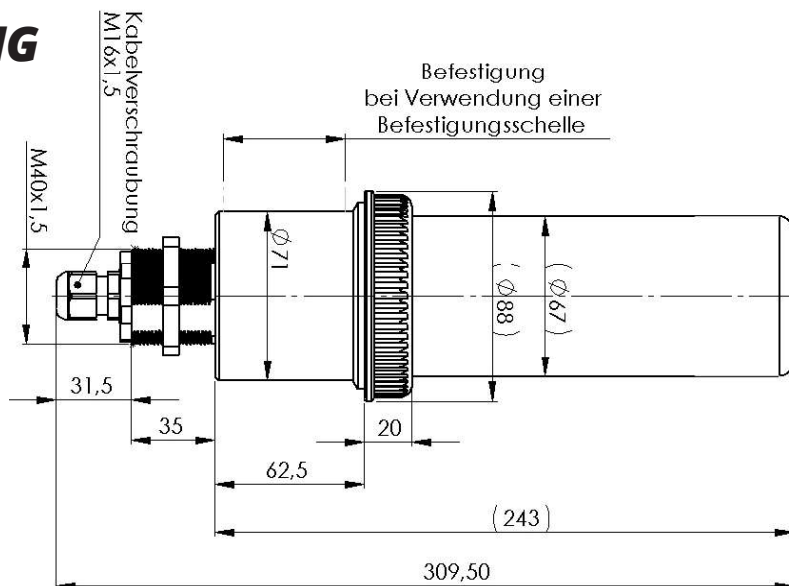
// BALLAST (external)

Output voltage	24 V DC
Output power	min. 12 W

// ELECTRICAL CONNECTION

Cable gland	M16x1,5 PA
Internal connection	luster terminal, 2-pole

// TECHNICAL DRAWING



// SHORT OVERVIEW

TYPE	ITEM NO.	VOLTAGE	POWER	LUMINOUS/ LUMEN	COVERAGE	DIMENSIONS/ MM	CONNECTION
LumoLED K2	591-167-001	24 V DC	7,2 W	1050	Borosilicate	Ø 67x309,5	cable gland

// VARIATIONS

TYPE	ITEM NO.	VOLTAGE	POWER	LUMINOUS/ LUMEN	COVERAGE	DIMENSIONS/ MM	CONNECTION
LumoLED K2	591-167-002	24 V DC	7,2 W	1050	Borosilicate	Ø 67x285	M12
LumoLED K2	591-167-003	24 V DC	7,2 W	1050	Borosilicate	Ø 67x262x165	cable gland
LumoLED K2	591-167-004	24 V DC	10 W	1260	Borosilicate	Ø 67x287,5	cable gland
LumoLED K2	591-167-005	24 V DC	9 W	1330	Borosilicate	Ø 67x260,5	cable gland
LumoLED K2	591-167-006	24 V DC	10 W	1330	Borosilicate	Ø 67x237	cable gland
LumoLED K2	591-167-007	24 V DC	9 W	1330	Borosilicate	Ø 67x213	cable gland

// FIXING / ACCESSORIES (optional)



ITEM NO. 599-001-001
fixing clamp Ø70 mm, galvanised,
straight



ITEM NO. 599-001-002
fixing clamp Ø70 mm, galvanised,
angle plug, wall distance 70 mm,
with distance bush



ITEM NO. 599-001-003
fixing clamp Ø70 mm, galvanised,
angle plug, wall distance 100 mm



ITEM NO. 599-001-004
fixing clamp Ø70 mm, galvanised,
straight, with distance tube



ITEM NO. 599-001-016
Tension clamp D70 mm VPE 1 pc.



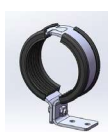
ITEM NO. 599-001-011
NBR; galvanised; washer
cylinder head screw



ITEM No. 599-001-012
NBR; galvanised



ITEM NO. 599-001-010
NBR; galvanised
spacer socket



ITEM NO. 599-001-008
NBR; galvanised, cylinder head screw
washer



ITEM NO. 599-001-022
silicone, A4, cylinder head screw
washer



ITEM NO. 599-001-015
NBR; galvanised; spacer socket
wing screw short

Power supply SELV (IP67)



ITEM NO. 213-820-219
Input: 110-240 V | 50-60 Hz |
Output: 24 V DC | max. 25 W

// STANDARDS

EN 55015:2016-04
EN 60598-1:2015-10
EN 62031:2015-09
EN 61000-4-4:2013-4
EN 61000-3-2:2015-3
EN 61000-4-5:2015-03
EN 61000-3-2:2017-03
EN 61000-4-2:2009-12

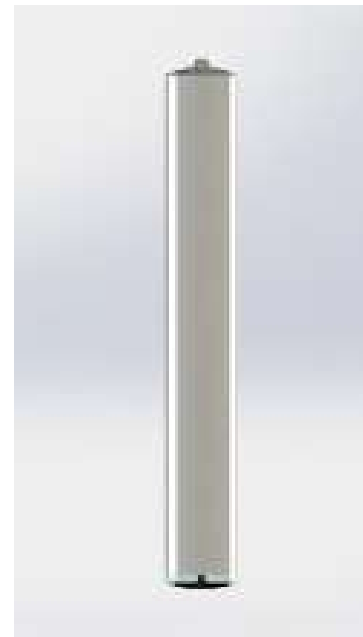
TECHMALUX

LumoLED K3

// TECHNICAL DATA

ITEM NO.: 591-100-002

Operating voltage	230 V AC 50 Hz
Rated output	6 W
Ambient temp.	-5°C - max. 40°C
System of protection	IP54
Protection class	SK II
Weight	0,62 kg
Protective tube	Polycarbonat
Type of lighting	Tubular lamp
Scope of application	Industrial sector



// LIGHT SOURCES

Lifetime	30.000 h
Colour rendering	Ra > 80
Energy efficiency class	A ++
Luminous flux	700 lm
Light efficiency	116 lm / W
Light colour	4000 K

// ELECTRICAL CONNECTION

Type of connection	open cable end, 7m Connection cable
--------------------	--

// FEATURES

- Robust, compact & efficient
- Space-saving installation due to slim design
- Low maintenance & service-friendly
- Resistant against the most common coolants and lubricants
- Simple installation and replaceable, if necessary

// SHORT OVERVIEW

TYPE	ITEM NO.	VOLTAGE	POWER	LUMINOUS/ LUMEN	PROTECTIVE TUBE	DIMENSIONS/ MM	CONNECTION
LumoLED K3	591-100-002	230 V AC	6 W	700	PC	296x40	open cable end

// TECHNICAL DRAWING



// STANDARDS

EN 55015:2016-04
EN 60598-1:2015-10
EN 62031:2015-09
EN 61000-4-4:2013-4
EN 61000-3-2:2015-3
EN 61000-4-5:2015-03
EN 61000-3-3:2014-03

TECHMALUX

LumoLED K2

// TECHNICAL DATA

ITEM NO.: 591-167-021

Operating voltage	24 V DC
Rated output	7,2 W
Ambient temp.	-5°C - max. 40°C
System of protection	IP67
Protection class	SK II
Weight	1,48 kg
Coverage	Borosilicate
Type of lighting	Tubular lamp
Scope of application	Industrial sector



// LIGHT SOURCES

Number of LEDs	28
Current	0,3 A
Colour rendering	Ra > 80
Luminous flux	1050 lm
Light efficiency	145 lm / W
Light colour	5000 K

// BALLAST (external)

Output voltage	24 V DC
Output power	min. 12 W

// ELECTRICAL CONNECTION

Connection	5 m connection cable
Internal connection	luster terminal, 2-pole

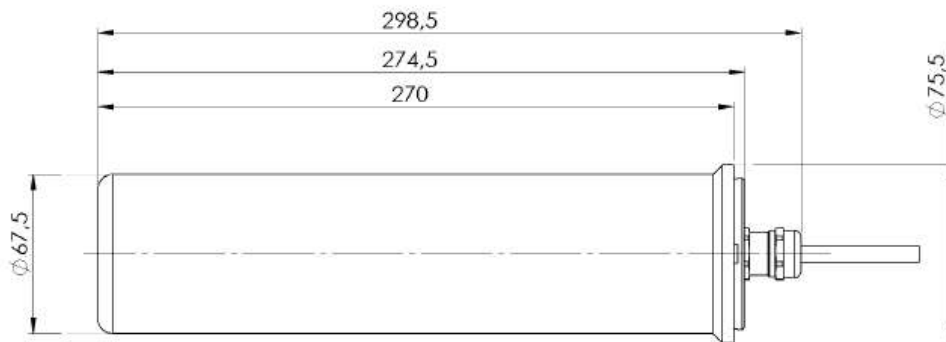
// FEATURES

- Highly luminous machine tube lamp in miniature
- Place-saving installation due to slim design
- Connection cable, 5 m, included
- Very good light output
- Glare-free illumination due to built-in glare protection

// SHORT OVERVIEW

TYPE	ITEM NO.	VOLTAGE	POWER	LUMINOUS/ LUMEN	COVERAGE	DIMENSIONS/ MM	CONNECTION
LumoLED K2	591-167-021	24 V DC	7,2 W	1050	Borosilicate	Ø 67,5x298,5	5 m cable

// TECHNICAL DRAWING



// FIXING / ACCESSORIES (optional)

Power supply SELV (IP67)



ITEM NO. 213-820-219

Input: 110-240 V | 50-60 Hz

Output: 24 V DC | max. 25 W

Fixing clamps



ITEM NO. 599-001-001

Fixing clamp Ø70 mm, galvanised, straight



ITEM NO. 599-001-002

Fixing clamp Ø70 mm, galvanised, angle plug, wall clearance 70 mm, mit distance bush



ITEM NO. 599-001-003

Fixing clamp Ø70 mm, galvanised, angle plug, wall clearance 100 mm



ITEM NO. 599-001-004

Fixing clamp Ø70 mm, galvanised, gerade, mit Distanzrohr



ITEM NO. 599-001-016

Tension clamp D70 mm VPE 1 pc

// STANDARDS

EN 55015:2016-04
EN 60598-1:2015-10
EN 62031:2015-09

TECHMALUX