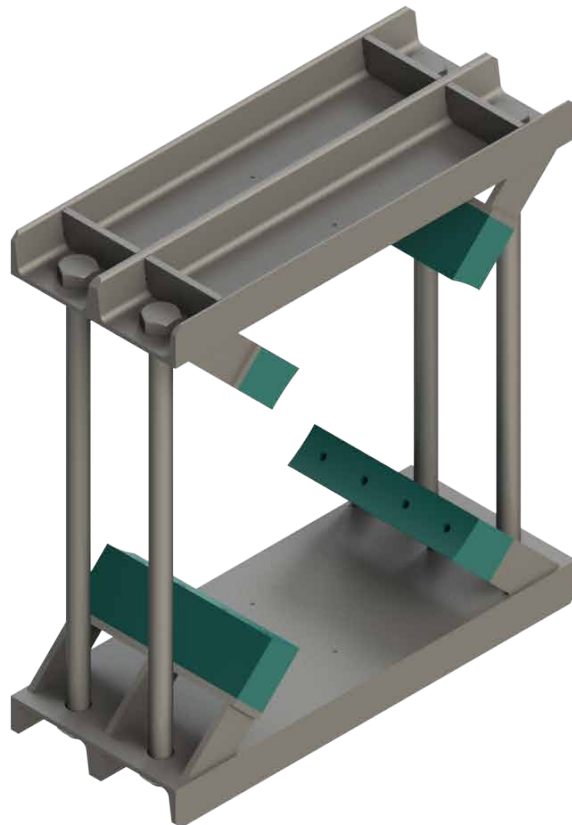
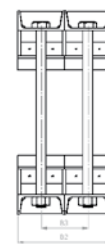
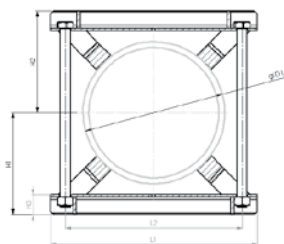
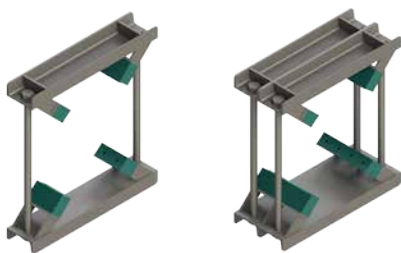


11 07

STAHL-KONSTRUKTIONSSCHELLE MIT ROHRUNTERLAGEN

**STEEL-CONSTRUCTION CLAMP
WITH TUBE SADDLES**





Rohr-AD mm O.D.mm	Stahl-Konstruktionsschelle Steel-construction clamp								Sechskantschraube Hexagon head screw	Anzahl der Rohrunterlagen Number of tube saddles
D1	L1	L2	H1	H2	H3	B1	B2	B3		
220 - 275	420	330	220	220	60	140	280	140	M30 x 370	4
276 - 325	460	370	240	240	60	140	280	140	M30 x 410	4
326 - 370	510	420	260	260	60	140	280	140	M30 x 450	4
371 - 425	570	480	290	290	60	140	280	140	M30 x 510	4
426 - 485	620	530	305	305	60	140	280	140	M30 x 540	4
486 - 550	680	590	370	370	60	140	280	140	M30 x 670	4
551 - 630	760	670	410	410	60	140	280	140	M30 x 750	5
631 - 715	845	755	452	452	60	140	280	140	M30 x 840	5
716 - 800	940	850	495	495	60	140	280	140	M30 x 920	5

// BESTELLBEISPIEL

RKP-355,6/CRVIF
 RRPD-273/Zn

RK P - 220 / CRVIF

Durchmesser
 220

Ausführung
 D = doppelt

Werkstoff (Rohrunterlagen)
 P = Polypropylen, N = Polyamid

RK = Stahl-Konstruktionsschelle mit Rohrunterlagen

Merkmale
 Zn = verzinkt
 CRVIF = chrom VI frei
 Phos = phosphatiert
 P = grundiert
 1.4571 = Edelstahl
 1.4301 = Edelstahl

// EXAMPLE OF ORDER

RKP-355,6/CRVIF
 RRPD-273/Zn

RK P - 220 / CRVIF

Diameter
 220

Version
 D = double

Material (tube saddles)
 P = polypropylene, N = polyamide

RK = Steel-construction clamp with tube saddles

Features
 Zn = zinc plated
 CRVIF = chromium VI free
 Phos = phosphated
 P = primed
 1.4571 = stainless steel
 1.4301 = stainless steel

